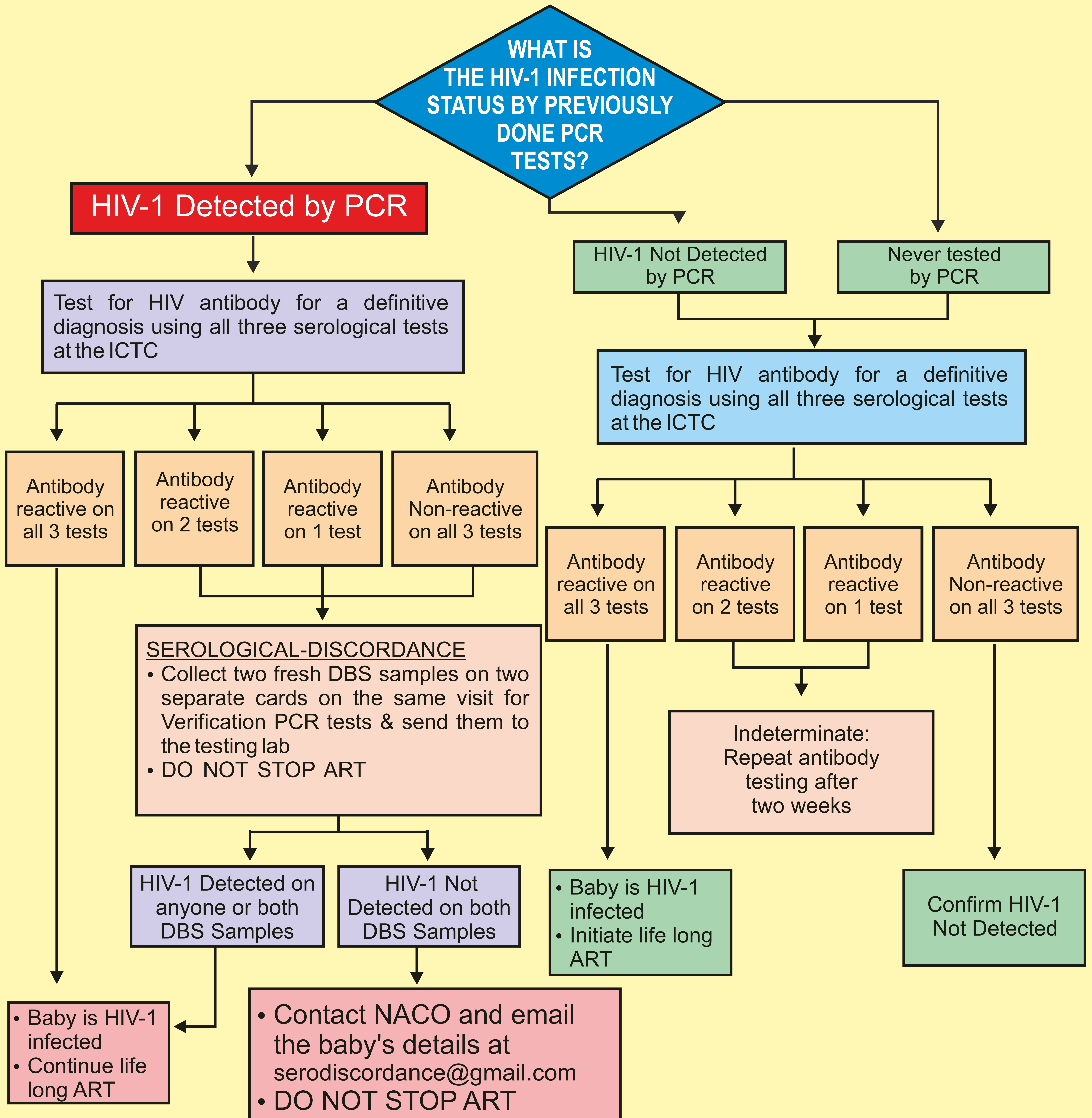


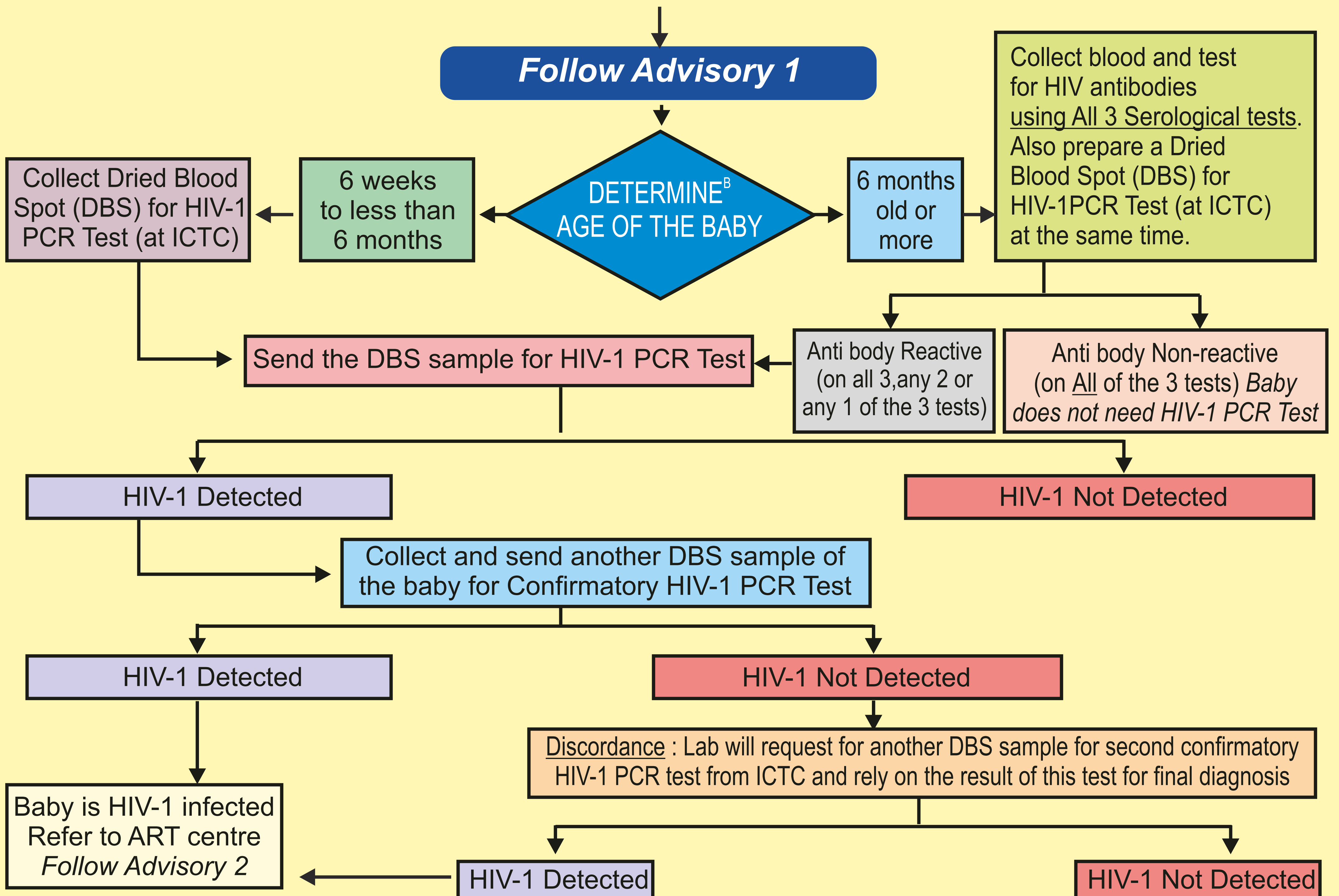
18 MONTH ANTIBODY TESTING ALGORITHM FOR ALL BABIES : 2015

Baby presents at the ICTC at 18 months of age or later



NATIONAL TESTING ALGORITHM FOR HIV-1 EXPOSED INFANTS AND CHILDREN < 18 MONTHS : 2015

HIV exposed baby (born to HIV positive mother) or baby referred from Medical Officer with unknown exposure status presents at the ICTC (at least 6 weeks old)



Advisory 1

- Start cotrimoxazole if not already started
- Encourage exclusive breast feeding for all babies till 6 months of age and avoid mix feeding
- If > 6 months of age initiate complementary food along with breast feeding

Advisory 2

- Continue cotrimoxazole till 5 years of age
- Manage OI, if any
- Start LPV/r based ART irrespective of CD4 count
- If breast fed, continue breast feeding till 2 years of age for 'HIV-1 Detected' baby, avoid mix feeding before 6 months of age and initiate complementary food after 6 months of age
- Test for HIV Anti body for definitive diagnosis using all three serological tests at 18 months of age at the ICTC

Advisory 3

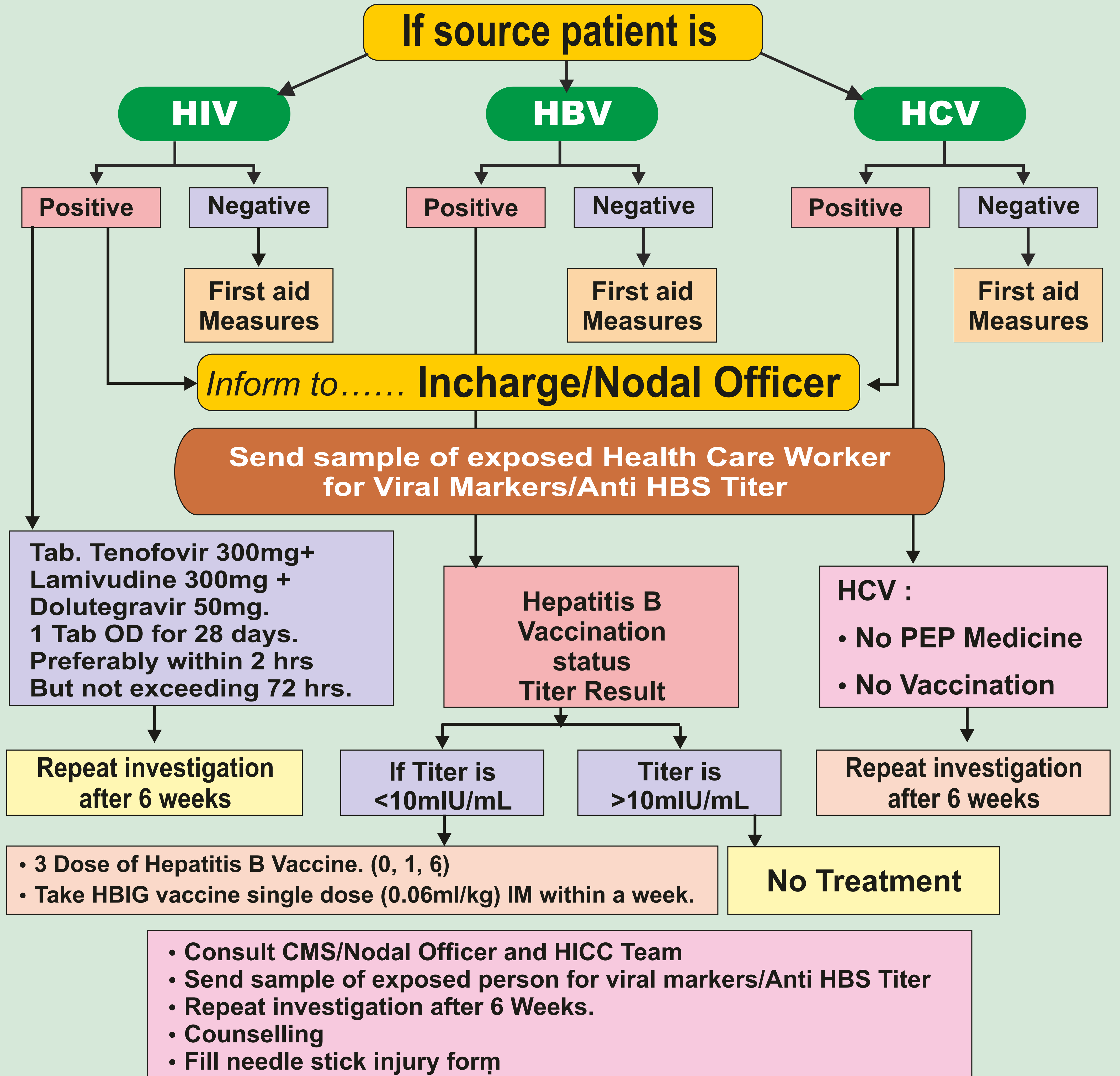
- Repeat test from^B at 6 months of age OR 12 months of age OR 6 weeks after last breast milk feeding, whichever is earlier
- If baby develops signs and symptoms of HIV infection at < 6 months of age, repeat HIV-1 PCR test from^A
- If baby develops signs and symptoms of HIV infection at greater than or equal to 6 months of age, repeat test from^B
- Continue cotrimoxazole until proven negative by all three anti body tests at 18 months of age or later
- If breast fed, continue breast feeding till 1 year of age for 'HIV-1 Not Detected' baby, avoid mix feeding before 6 months of age and initiate complementary food after 6 months of age
- Test for HIV Antibody for definitive diagnosis using all three serological tests at 18 months of age at the ICTC

- Serological test not recommended
- If baby is < 6 weeks of age: HIV-1 PCR Test not recommended
- 6 weeks and above is the optimal age for a routine first HIV-1 PCR Test

UNIVERSAL ADVISORY

- Cotrimoxazole Preventive Therapy (CPT) to be initiated for all HIV exposed babies from 6 weeks of age and continued until proven HIV negative on all three serological tests at 18 months of age or later. In case the baby is found to be HIV infected by final confirmatory diagnosis on all three serological tests, LPV/r based ART should be initiated and CPT should be continued until 5 years of age.
- Initiate babies on exclusive breast feeding till 6 months of age, avoid mix feeding (any other milk products) before 6 months of age and add complementary food after 6 months of age. If the baby has been started on exclusive replacement feeding, continue the same and add complementary food after 6 months of age.
- In rare cases of Serological-Discordance, i.e., the baby tests negative on any one or any two or all three serological tests after having been confirmed positive by HIV-1 PCR Test, continue ART and verify HIV-1 infection status through PCR testing. Refer the chart on '18 month antibody testing algorithm for all babies'.

NEEDLE STICK INJURY (NSI)



THE FIRST FOUR EASY STEPS TO TAKE IF YOU RECEIVE A SHARPS INJURY



1. ALLOW IT TO BLEED



2. WASH IT
With soap, under running water



3. COVER IT
With a waterproof dressing



4. REPORT IT